



LINDISFARNE

Anglican Grammar School

International Prospectus



ACKNOWLEDGEMENT OF COUNTRY

Lindisfarne Anglican Grammar School respectfully acknowledges the Traditional Owners and Custodians of the land on which our school stands, the Bundjalung people. We recognise their deep connection to Country and honour their enduring cultural heritage.

In the spirit of reconciliation, we pay our respects to Bundjalung Elders - past, present, and emerging - and extend that respect to all Aboriginal and Torres Strait Islander peoples. We acknowledge their wisdom, traditions, and contributions to education, storytelling, and the care of this land for generations.

As an inclusive and globally connected school, we are committed to nurturing understanding, respect, and meaningful engagement with First Nations cultures. Through learning, reflection, and shared experiences, we seek to uphold the values of reconciliation within our school community and beyond.

Artwork by Narelle Urquhart, a Wiradjuri woman from central New South Wales with connections to the Bundjalung Nation of the Northern Rivers.

This painting depicts Lindisfarne Anglican Grammar School coming together in reconciliation on Bundjalung Country with its First Nations students, staff, and community.



CONTENTS

PRINCIPAL'S WELCOME	06	MIDDLE SCHOOL	20
OUR VISION, OUR VALUES, OUR CULTURE	07	SENIOR SCHOOL	22
OUR STRATEGIC PLAN	08	BEYOND THE CLASSROOM	24
ABOUT THE LOCAL AREA	10	FACILITIES	28
WHY CHOOSE LINDISFARNE?	12	PREPARED TO SUCCEED	30
SCHOOL CREST	14	SUPPORT SERVICES	32
BENEFITS OF CO-EDUCATION	15	ACCOMMODATION	34
A SEAMLESS K to 12 JOURNEY	16	STUDENT TESTIMONIALS	36
JUNIOR SCHOOL	18	ENROLMENT PROCESS	38



PRINCIPAL'S WELCOME

Welcome to Lindisfarne Anglican Grammar School, the leading co-educational Preschool to Year 12 Anglican school in the southern Gold Coast, Tweed Coast and northern New South Wales region.

Lindisfarne began as a small Anglican primary school in 1981 through an initiative of the rector and parishioners of St Cuthbert's Anglican Church, Tweed Heads.

The School proved so popular with the community that it has been evolving and expanding ever since.

Our school is built upon the values of Compassion, Wisdom, and Respect, which shape everything we do. We are dedicated to providing students with a strong foundation and the necessary support to ensure their safety, health, academic growth, and positive contribution to both our school and community.

At Lindisfarne, we hold true to our Anglican tradition and actively celebrate it. We have developed unique learning programs that instill essential skills and qualities in our students, empowering them to become the leaders of tomorrow while emphasising the importance of learning to serve others and achieving economic wellbeing.

Personal achievement is of paramount importance at Lindisfarne, and we believe that a partnership between parents, students, and staff is crucial for student success.

Our commitment to leadership, high standards, and collaboration is at the forefront of our strategic intent. We promote a sense of optimism throughout the School, encouraging our students to pursue their dreams, make a positive impact, and leave the world a better place.

At Lindisfarne, we offer academically challenging programs catering to individual needs and aspirations, preparing students intellectually and socially for a global society. Our well-balanced co-curricular program provides opportunities for sports, cultural activities, service projects, and partnerships with local and overseas schools, fostering courage, confidence, cross-cultural understanding, and meaningful learning experiences beyond the classroom.

Lindisfarne Anglican Grammar School looks forward to welcoming you and your family into our school community.

Stuart Marquardt
Principal



OUR VISION, OUR VALUES, OUR CULTURE

OUR VISION

Lindisfarne Anglican Grammar School is a high-quality, independent, Anglican, co-educational grammar school that serves the southern Gold Coast, Tweed Coast and northern New South Wales. We seek to provide the distinctive identity, relationships, learning, and leadership that support our staff and families to work together to meet our high expectations for the achievement and holistic development of our students in our local, national, and international communities.

OUR VALUES

- Compassion:** Building genuine relationships through generosity of spirit and care for others.
- Wisdom:** Gaining the knowledge, understanding, skills and character that comes from learning.
- Respect:** Appreciating all within our environment and leaving an honourable legacy for those who follow.

OUR CULTURE

- Leadership:** Creating the competencies that equip us with hope, clarity and direction.
- Standards:** Establishing high expectations that empower student involvement, development, achievement, service and voice.
- Collaboration:** Working together within aligned structures, processes, practices and systems that enable our desired ethos and strategy.



OUR STRATEGIC PLAN

Our aim is for every graduate to be a collaborative problem-solver who is equipped, enabled and empowered academically and emotionally to assume responsibility for making a positive contribution to the world. We achieve this through...



Achievement

A clear, shared set of high-level expectations for achieving educational standards in keeping with the culture, beliefs and associated strategy.

Initiatives

Direct our strategic potential through targeted, timely and well-executed initiatives.



Relationships

Build lifelong learning associations that give students the skills necessary for both their educational successes and their future successes within the local, national and international community.

Communications

Improve the clarity, consistency and effectiveness of our school community's communication at both strategic and operational levels.



Reputation

Establish and express a consistent identity, brand and level of performance that reflect our desired reputation.

ABOUT THE LOCAL AREA

Lindisfarne Anglican Grammar School is ideally situated on the Tweed Coast, just 15 minutes from the Gold Coast International Airport.

Our school is spread across two picturesque campuses: the Junior campus, located near the Tweed River, and the Mahers Lane campus, nestled in the hills of Terranora, offering sweeping views of the surrounding area.


The Tweed Coast is renowned for its exceptional quality of life, combining the stunning beauty of long, pristine beaches and world-class surf and reef breaks with the lush, biodiverse hinterland. It is also conveniently close to the Gold Coast, Australia's holiday capital, providing easy access to theme parks, shopping, dining, and cultural experiences.

Our region offers a unique and inviting study destination. With over 300 days of sunshine each year, its safe, friendly environment and prime location make it a top choice for both Australian and international students.




2024 ACADEMIC RESULTS


GRADUATES WORLDWIDE

 **98%**
OF STUDENTS WERE ELIGIBLE FOR AN ATAR


THE DUX ACHIEVED AN ATAR SCORE OF
99.3


STUDENTS ACHIEVED IN THE TOP TWO PERFORMANCE BANDS IN THE FOLLOWING SUBJECTS
100% in

English Extension 2,
Mathematics Extension 2,
History Extension,
Dance, Music 1
90% in English Extension 1
83% in Science Extension

29 
STUDENTS COMPLETED A DIPLOMA OF BUSINESS AS WELL AS THEIR HSC


2
STUDENTS ON THE ALL-ROUNDER ACHIEVERS MERIT LIST

DESTINATION UNIVERSITIES

- University of Melbourne (ranked 13th world)
- University of Sydney (ranked 18th world)
- The Australian National University (ranked 30th world)
- The University of Queensland (ranked 40th world)
- The University of New South Wales (ranked 19th world)
- University of Technology Sydney
- Macquarie University
- RMIT University
- Queensland University of Technology
- Bond University

- Griffith University
- James Cook University
- Southern Cross University
- University of Sunshine Coast
- Western Sydney University
- University of Tasmania
- Berklee College of Music - USA
- Millersville University - USA
- University of Nevada - USA
- Otterbein University - USA

90%
OF GRADUATES' POST SCHOOL DESTINATION WAS UNIVERSITY


73%
OF STUDENTS RECEIVED EARLY ENTRY OFFERS TO UNIVERSITY

HOLISTIC EDUCATION

>36 ACTIVITIES AND CO-CURRICULAR PROGRAMS
>35 SPORTS ON OFFER
850 INDIVIDUAL MUSIC/DRAMA LESSONS PER FORTNIGHT

44
YEARS OF EXCELLENCE FOUNDED IN 1981

STUDENTS
2,126
AGE 3 - 18

2
CAMPUSES

WORLD-RENOWNED INTERNATIONAL PROGRAMMES



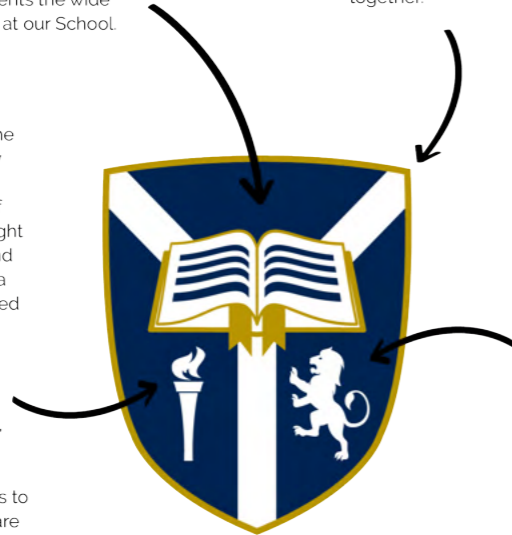
SCHOOL CREST

The Lindisfarne Anglican Grammar School crest has been carefully designed to reflect our history, our Anglican tradition.

The open book symbolises the Lindisfarne Gospels, sacred manuscripts carefully created by the Lindisfarne monks in the late 7th or early 8th century, now housed in the British Library. It sits at the heart of the crest signifying the centrality of the Word of God in a Lindisfarne Anglican Grammar School education. The book is also a symbol of learning and represents the wide range of opportunities available at our School.

The two white bands starting in the top corners and converging into one, represent England's River Tweed and the local Tweed River. They signify unity of purpose and strength — a concept important in Lindisfarne Anglican Grammar School as we work together.

The burning torch signifies St Aidan who was the founder of the Christian community of the Holy Island of Lindisfarne in 635 AD. The torch represents the light of the Gospel which St Aidan brought both in the form of preaching and teaching. Under his leadership, a centre of learning was established within the Island community. It also represents the hope that, through participation in a broad range of learning experiences and with excellence of teaching, the students who pass through Lindisfarne Anglican Grammar School will become light bearers to the communities in which they are called to serve.



The rampant lion is included from the crest of St Cuthbert, the famous monk and later Bishop of Lindisfarne. St Cuthbert was known for his devotion to God and his care and concern for his fellow man. The lion was a symbol of his great courage and strength as a servant of God. The rampant lion is depicted facing left to be always ready, as to the right is seen as retreating. It is the aim of Lindisfarne Anglican Grammar School to enable students to become men and women of faith and to stand firm for what is right and true.

LINDISFARNE

Anglican Grammar School

Luceat Lux Vestra — Let Your Light Shine



BENEFITS OF CO-EDUCATION

Lindisfarne Anglican Grammar is a co-education school.

We believe in the system of educating both boys and girls together, promoting gender equality and fostering a supportive and inclusive learning environment. Many schools have embraced this approach, recognising the numerous benefits it offers. These include:

- Co-education breaks down gender stereotypes and encourages appreciation of peers' talents and abilities.
- Boys and girls have equal opportunities to learn, participate, and excel in co-educational schools.
- Co-educational schools help students develop strong social skills and healthy relationships.
- Students learn collaboration, understanding of different perspectives, and empathy.
- Co-education fosters critical thinking skills.
- Students gain skills and mindset necessary for success in personal and professional lives.
- Embracing co-education is a valuable step toward fostering a more equitable and inclusive society.

A SEAMLESS K TO 12 JOURNEY

Adopting a 'one school, two campuses, three subschools' approach allows us to better manage the transition from Junior School (Kindergarten to Year 4), through Middle School (Years 5 to 8), then Senior School (Years 9 to 12).

Each subschool covers two stages of the New South Wales Curriculum and has an overarching theme to connect student learning experiences.

A designated subschool head and leadership team bring together high level and age-appropriate academic, co-curricular, wellbeing and pastoral care structures to support learning and achievement.



JUNIOR SCHOOL

The Junior School includes the Early Learning Centre for Preschool and Kindergarten and Years 1 to 4.

From a young age, our students are encouraged to take ownership of their learning by reflecting on achievements and setting future goals.

We promote interdependence rather than competitiveness through cooperative learning, higher order thinking and problem solving which helps to develop skills in leadership, negotiation and collaboration.

The academic program focuses on establishing a strong foundation in literacy and numeracy and is firmly based on the NSW Education Standards Authority curriculum.

Subject areas for Years 1 to 4 (Stages 1 and 2) students include: English, Mathematics, Science, Human Society and Its Environment (HSIE), Personal Development Health and Physical Education (PDHPE), Dance, French (Years 1 to 4), Library, Music, Religious and Values Education, Technology and Visual Arts.



MIDDLE SCHOOL

Middle School includes classes from Years 5 to 8.

- Students in Years 5 and 6 are moving away from the predominantly teacher-directed environment in primary school. They are beginning to think more independently and understand themselves better.
- Students in Years 7 and 8 have entered a new environment that encourages independence. They still receive meaningful support, structure, and guidance to meet their changing needs both in and outside the classroom.
- Our Middle School philosophy focuses on meeting these different needs and providing a smooth transition for our students.

Subject areas available include:

YEARS 5 AND 6 (STAGE 3)

English, Mathematics, Science, Human Society and Its Environment (HSIE), Personal Development Health and Physical Education (PDHPE), French, Japanese, Library, Music, Performing Arts, Religious and Values Education, Technology, and Visual Arts.

YEARS 7 AND 8 (STAGE 4)

English, Mathematics, Science, Human Society and Its Environment (HSIE), Personal Development Health and Physical Education (PDHPE), French, Japanese, Spanish, Music, Religious and Values Education, Technology and Visual Arts.



SENIOR SCHOOL

The Senior School encompasses Years 9 to 12.

The focus for the final school years includes academic, pastoral care and co-curricular programs which are designed to support students through their final years of schooling by encouraging independence and self-confidence in a supportive environment.

The subjects in Years 9 and 10 (Stage 5) consist of the core subjects of: English, Mathematics, Science, Human Society and Its Environment (HSIE), Personal Development Health and Physical Education (PDHPE), plus a suite of electives of which students choose two.

Over the course of Stage 6 (Years 11 and 12), all students must study English and an additional 10 units of HSC courses.

YEAR 9 and YEAR 10 - MANDATORY SUBJECTS

- English
- Mathematics
- Science
- Human Society and Its Environment - Geography/History
- Personal Development, Health and Physical Education

YEAR 9 and 10 ELECTIVES

You can find a complete list of Electives in the Curriculum Manual on our School's website.

YEAR 11 and YEAR 12 - MANDATORY SUBJECTS

- English

Year 11 and 12 ELECTIVES

You can find a complete list of Electives in the Curriculum Manual on our School's website.

*Scan the QR code for Curriculum Manuals on our School's website under Parent resources/Senior School.



Curriculum Manuals



Example of effect of a tax designed to reduce quantity produced

If a market arrives at an equilibrium where too large a quantity of an undesirable good or service is being produced, governments can step in. Ways they can reduce the quantity being produced include imposing laws or taxes. Ideally, the size of the tax will be equal to the social cost - thus **"internalising the externalities"**.



BEYOND THE CLASSROOM



SPORT

- AFL
- Basketball
- Cricket
- Cross Country
- Dance Eisteddfod
- Equestrian
- Football (Soccer)
- Futsal
- Golf
- Gymnastics/Trampolining
- High Performance Surfing Academy
- Hockey
- Indoor Rock Climbing
- Kayaking
- Kokoda Training
- Matt Fydler Sports Academy
- Mountain Biking
- Netball
- NFL FLAG
- Pickelball
- Pilates
- Rhythmic Gymnastics
- Rowing
- Rugby Union
- Surfing
- Swimming
- Tennis
- Touch Football
- Triathlon
- Volleyball
- Yoga

MUSIC

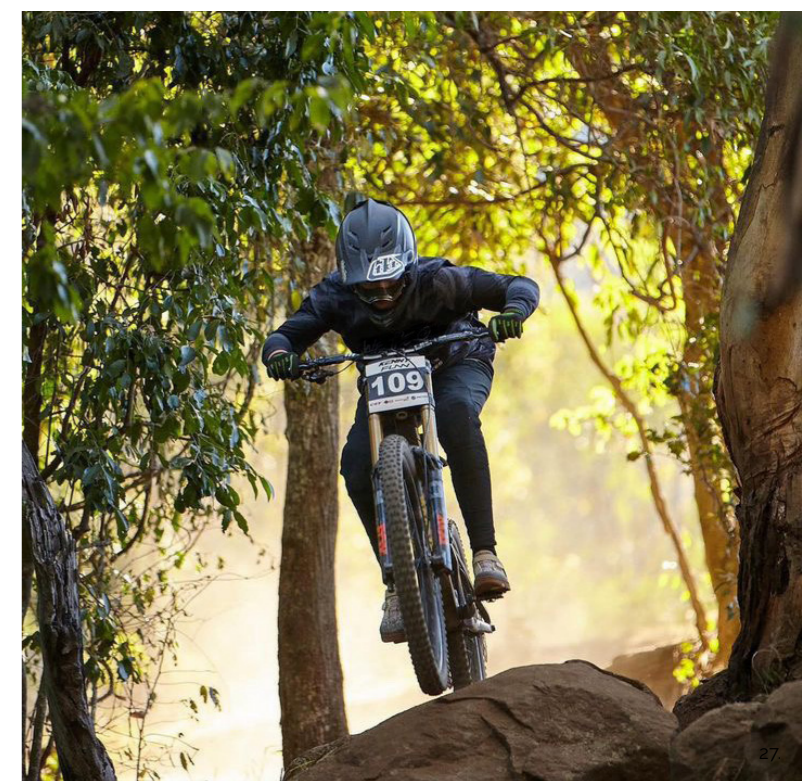
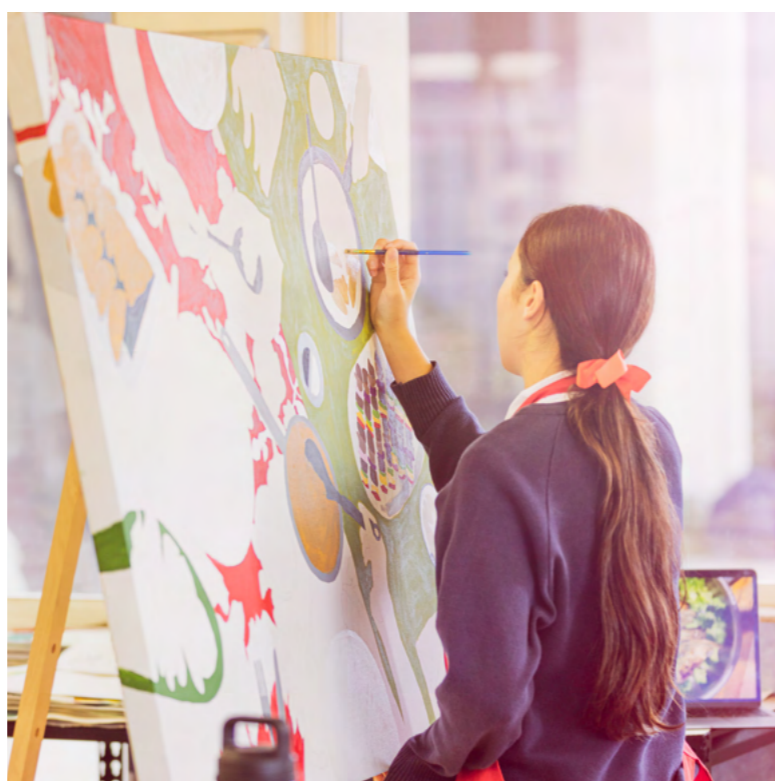
- Chamber Strings
- Drumline Percussion
- Guitar Ensemble
- Middle School Choir
- Middle School Orchestra
- Middle School Rock Band
- Middle Stage Band
- Senior Choir
- Senior School Orchestra
- Senior Stage Band

CLUBS AND ACTIVITIES

- Actors Club
- Careers Drop in
- Chess
- Elementary Dance Group
- eSports
- French Club
- Garden Club
- Hobby Hub
- Mindfulness Program
- Reading
- Round Square
- VEX Robotics

CHARACTER DEVELOPMENT/PERSONAL GROWTH

- Camps
- Duke of Edinburgh's International Award
- Kokoda Challenge
- Round Square
- Service Learning



FACILITIES

Lindisfarne Anglican Grammar School offers world-class facilities across two campuses, designed to inspire academic excellence, creativity, and wellbeing. Our facilities reflect our commitment to holistic education, fostering growth across academic, artistic, sporting, and co-curricular domains.

Junior Campus (Preschool to Year 4) – Tweed Heads South

Our nurturing Junior School campus, established in 1981, provides a dynamic learning environment. The site adjoins Arkinstall Park, broadening the opportunities for our students.

- **Early Learning Precinct:** Purpose-built Preschool and Kindergarten classrooms with flexible learning spaces and a scenic boardwalk connecting sub-communities.
- **Technology and Innovation:** 16 tech-enabled classrooms supporting our ConnectEd one-to-one device program.
- **Sustainability and Outdoor Learning:** A dedicated student kitchen, sustainability garden, organic recycling, and a chicken hutch as part of the Stephanie Alexander Kitchen Garden Program.
- **Sport and Play:** Two playgrounds, a basketball/netball court, and access to Arkinstall Park's soccer pitches, netball, and tennis courts.
- **Creative Arts and Music:** A new state-of-the-art Performing Arts Centre, a hub for creativity and learning. With purpose-built spaces designed for musical and dramatic pursuits, the Centre enables students to participate and explore their creative talents in a supportive and inspiring setting.
- **Student Support and Engagement:** The IgnitEd Resource Centre for library, IT, coding, and robotics, plus an Out of School Hours Care facility.

Middle and Senior Campus (Years 5 to 12) – Terranora

Perched in Terranora with breathtaking valley and ocean views, this campus fosters academic and co-curricular excellence.

- **Modern Learning Spaces:** Purpose-built Middle School classrooms, five science labs, and a robotics lab.
- **Senior Centre:** Features a dedicated Year 12 study and social space, complete with collaborative and individual study areas, a common lounge, and a fully equipped kitchen. The Centre also houses an expansive gym, including an indoor 40m sprint track and state-of-the-art training equipment, and a versatile auditorium space.
- **Creative and Performing Arts:** Three Visual Arts rooms, a Textiles & Fashion Hub, a Drama & Performance Room, and a professional Recording Studio (Germinate Records).
- **Sport and Fitness:** A full-size indoor stadium (1,200+ seating), gymnasium, four multi-purpose outdoor courts, two sports fields, and elite cricket training nets.
- **Technology and Trades:** Industrial design workshops with 3D printers, laser cutters, and CNC milling; plus a Trades Skills Centre with a commercial kitchen.
- **Wellbeing and Student Support:** A large library, study hubs, and wellbeing spaces for our School Psychologist and Nurse.

The Boathouse – Cudgen Creek

Our Boathouse at Cudgen Creek, acquired in 2018, offers a unique outdoor classroom for Marine and Aquatic Studies. With direct water access, a launch space for kayaks, and a community jetty, it provides hands-on environmental learning and outdoor education experiences.



Senior Centre



Trade Skills Centre



Recording Studio



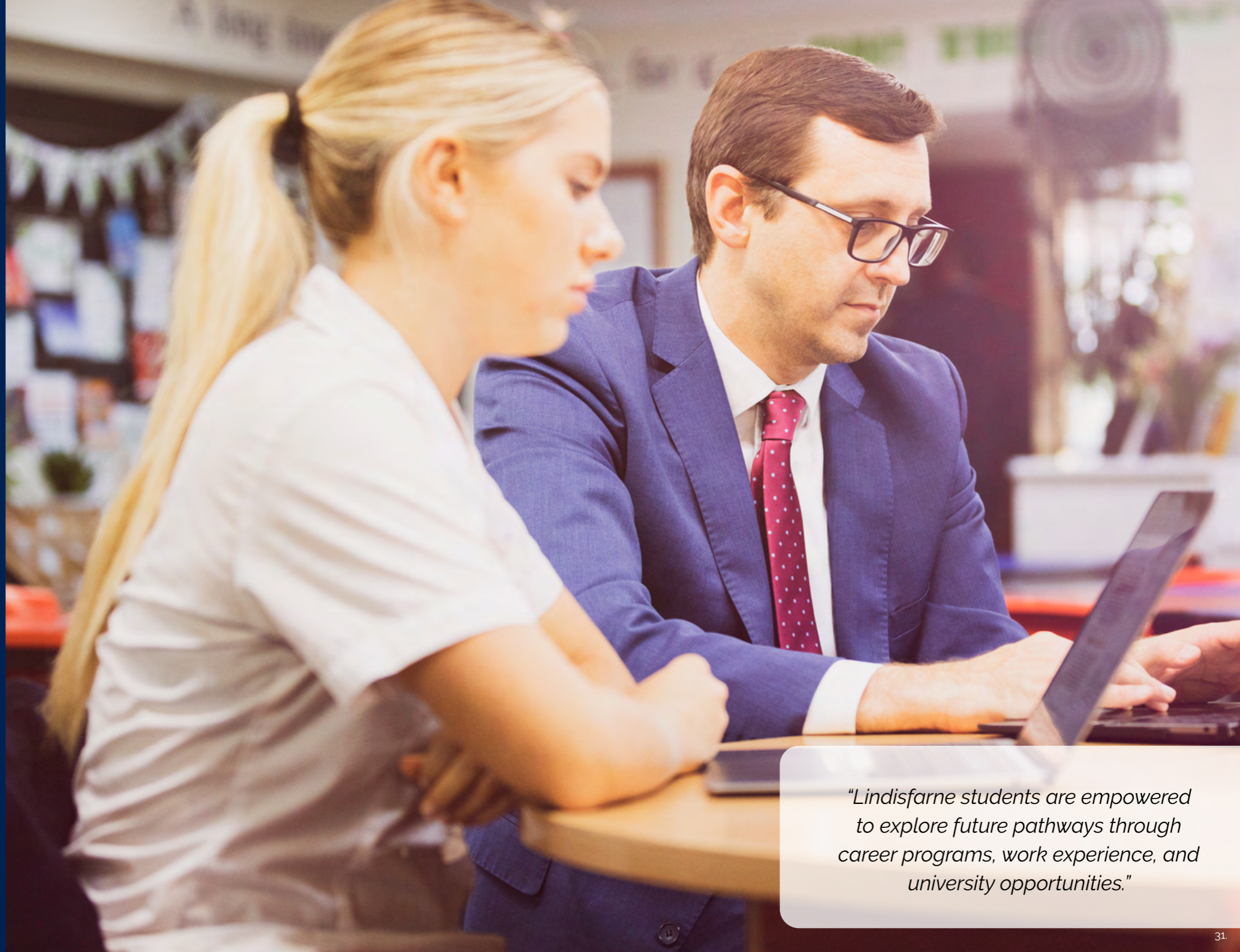
The Boathouse

PREPARED TO SUCCEED

Counselling and University Guidance

Throughout the final years of their Senior School journey, students are supported in exploring the pathways available to them within and post school. In Year 10 all students have a fortnightly Careers class where they prepare for HSC subject selection, explore the future of work and careers and the pathways that may be required to get there. A Career Match program is offered that matches a student's personality style to careers they would potentially be suited to. It delivers custom reports to each student, launching them on a journey of self-discovery and career exploration. Students also have the opportunity to engage in a work experience program where they go through the process of seeking employment, understanding workplace requirements, culminating in time spent at their employer of choice.

In Years 11 and 12 students have the opportunity to engage in both on and off campus University and Tertiary study information sessions, showcases, expos as well as the opportunity to engage in University extension programs in a wide variety of subject and interest areas. In Year 12 students participate in a week long program of University campus tours and visits, scholarship and entry workshops, careers panels and financial literacy workshops, in preparation for leaving school. Students have continuous access to individualised careers and pathways counselling to ensure successful pathways post school.



"Lindisfarne students are empowered to explore future pathways through career programs, work experience, and university opportunities."

SUPPORT SERVICES

We believe that holistic development is essential for our students to thrive academically, socially, and personally. We are dedicated to offering a supportive and inclusive environment for our international students that promotes their overall wellbeing and enables them to reach their full potential.

WELLBEING TEAM

Our Wellbeing Team is dedicated to supporting the holistic needs of international students, ensuring their smooth transition and overall success. This team includes School Nurses, Psychologists, Counsellors, Chaplains, and the Learning Enrichment Department. They provide a range of services tailored to address the unique social, emotional, and academic challenges faced by international students. From personalised counselling and mental health support to academic assistance and cultural adaptation resources, our team is committed to creating a nurturing and inclusive environment where every international student can thrive.

HEALTH FACILITIES

Each campus is equipped to provide comprehensive medical care for students, featuring a certified nurse on-site. Each facility is designed to address a range of health needs, from first aid to managing chronic conditions. Our experienced nurses ensure that students receive prompt and professional care, fostering a safe and healthy school environment.

SCHOOL CANTEEN

Each campus features a canteen where students can purchase meals for both morning tea and lunch, either in person or via the Flexischools app. Our canteens are designed to support the health and well-being of all students, including those with food allergies. We prioritise offering a diverse range of nutritious options that cater to various dietary needs.

CAMPUS SAFETY

To support the safety and well-being of everyone at our school, we regularly monitor and review procedures to ensure compliance and effectiveness in maintaining a secure and supportive environment for all. These measures address appropriate levels of supervision, building security, emergency procedures, cyber safety, health considerations, the safe use of grounds and facilities, and travel arrangements for school-related activities.

SCHOOL BUS SERVICE

Lindisfarne operates a private bus service for students living outside the local school bus zone. Students residing within the local area can use a dedicated school bus operated by Kinetic, the trusted transport partner of Transport for NSW.

CHILD PROTECTION

At Lindisfarne Anglican Grammar School, the safety, protection, and well-being of your child are paramount. We adhere strictly to Child Protection legislation and are committed to maintaining a secure environment where all students are safeguarded from harm. Our dedicated team is vigilant in addressing any concerns, ensuring that our school is a place where students feel safe, supported, and empowered to thrive. By fostering a nurturing atmosphere, we enable students to fully engage in their learning and enjoy a well-rounded educational experience.





"Hosting an international student was an absolute pleasure. It was wonderful to see how eager they were to engage with us, whether it was sharing meals, chatting about life experiences, or even participating in family activities. Hosting reminded us why we opened our home in the first place: to create meaningful connections and share the joy of cultural exchange, the entire experience was rewarding".

Manning Family

ACCOMMODATION

International students who do not reside with their own family are accommodated and cared for through our homestay program.

Homestay welcomes students into the home of a local family whilst studying at Lindisfarne Anglican Grammar School, providing complete immersion into the Australian culture and lifestyle.

A vital aspect of homestay is for students to experience everyday life as a participating family member. This will include things like joining family events, following family routines and contributing as a member of the household. All homestay families speak English in the home, as this is part of the full immersion experience.

Lindisfarne uses the experience of a homestay provider to ensure a smooth homestay program. The homestay environment can assist International students improve their English language skills.

Homestay families are carefully interviewed and selected. Student safety and wellbeing is a priority to Lindisfarne, not only during their time at school, but also within their homestay environment. Regular monitoring, and meetings with the homestay provider ensures that the level of care expected by Lindisfarne is met.



STUDENT TESTIMONIALS



"Lindisfarne is a school that has a lot of opportunities to challenge ourselves and team up with each other. During my time at Lindisfarne I was involved in many different activities, including the school musical, Mamma Mia! I also had the opportunity to participate in many sporting activities such as netball, surfing and Rugby Sevens, as well as the swimming and athletics carnivals. The school provided English language support which I found extremely helpful. To all the international students considering attending the school, I would say that it is an amazing experience and I would highly recommend it. I really had fun. I improved my English, was involved in many different activities, made great friendships, and I am grateful that I had the opportunity to experience the Australian way of life."

Iris Zanella
Italy



"My favourite time at Lindisfarne is the time with friends, and participating in music such as playing the guitar, and sports like basketball and volleyball. I also played in the volleyball team, winter and summer basketball seasons, and the Battle of the Bands. Through my time in Australia, I learned what it's like to live outside of Japan with different cultures. I also improved my English communication skills through experiences in Australia. I think Lindisfarne is a great school for education of course, and it has a great environment and service for sports and music."

Kanato Kawamura
Japan



"I am enjoying every minute I spend at Lindisfarne. The teachers care about me very much, and the students are very friendly. At Lindisfarne, the classroom pays attention to improving students' independent thinking ability, and the classroom atmosphere is relaxed, and students can ask questions freely. I joined the school's touch football team, and my next goal is to join the school rugby team. I get along very well with my host family and they have taught me many things, such as collecting honey. They are very friendly and caring, and the food is very delicious. If there are international students who want to study at Lindisfarne, I would not hesitate to highly recommend them to study at Lindisfarne, because here you will be naturally immersed in learning, and you will feel that the day goes by very fast."

Zhengjun (David) Li
China

"Lindisfarne is an inclusive school that has provided me with a strong sense of belonging. The teachers have consistently gone above and beyond to ensure that I receive the support I require, and they have consistently checked in on my wellbeing. On my first day, the transition felt quite daunting, but I was pleasantly surprised by the warm welcome from fellow students who approached me, eager to hear about my experiences. Overcoming the initial language barrier was the most challenging aspect of the transition, but after a few weeks, it ceased to be an issue."

Ana Clara Favaro Colofatti
Brazil



"I was able to experience a lot during my short stay at Lindisfarne. There were many events that I enjoyed at school and on the weekend my homestay family took me to many places. I think coming to Australia has expanded my horizons by meeting people from different countries and learning many things about Australia. I had a great time at Lindisfarne and would recommend it to others."

Karin Yabuno
Japan

ENROLMENT PROCESS

- STEP 1:** Submit a completed International Student Application Form
- STEP 2:** Assessment of Application
- STEP 3:** Interview Process and Outcome
- STEP 4:** Letter of Offer and Written Agreement
- STEP 5:** Acceptance of Offer and Payment
- STEP 6:** Confirmation of Enrolment (CoE) and Confirmation of Appropriate Accommodation and Welfare (CAAW)
- STEP 7:** Visa Application Process
- STEP 8:** Homestay Application Process
- STEP 9:** English Proficiency Checkpoint (if applicable)
- STEP 10:** Final Arrangements
- STEP 11:** Orientation

Contact Information

Contact | Rebecca Wilson - Manager International Development
 Email | International@lindisfarne.nsw.edu.au
 Phone | +61 7 5590 5099

ENGLISH LANGUAGE ENTRY REQUIREMENTS

Acceptable Test	For Entry to Year*	Minimum Test Result IELTS	Minimum Test Result AEAS	Minimum Test Result CAMBRIDGE
English language proficiency test obtained from a recognised ELICOS Course or recognised HSP Course.	Year 7, 8 and 9	5.0	46 - 56	B1 - 154
	Year 10 Semester 1	5.5	57 - 66	B2 - 162
Based on academic reports, Lindisfarne may allow a student to be informally assessed through an online or in-person interview.	Year 10 Semester 2	6.0	67 - 79	B2 - 169
	Year 11 Semester 1	6.0	67 - 79	B2 - 169





LINDISFARNE

Anglican Grammar School

Junior School

Preschool to Year 4
Sunshine Avenue Campus
Tweed Heads South
NSW 2486

Middle and Senior School

Years 5 to 12
Mahers Lane Campus
Terranora
NSW 2486

T: 07 5590 5099

E: international@lindisfarne.nsw.edu.au

PO Box 996,

Banora Point NSW Australia 2486

www.lindisfarne.nsw.edu.au

CRICOS No. 03803G

