

MAHERS LANE CAMPUS MASTER PLAN

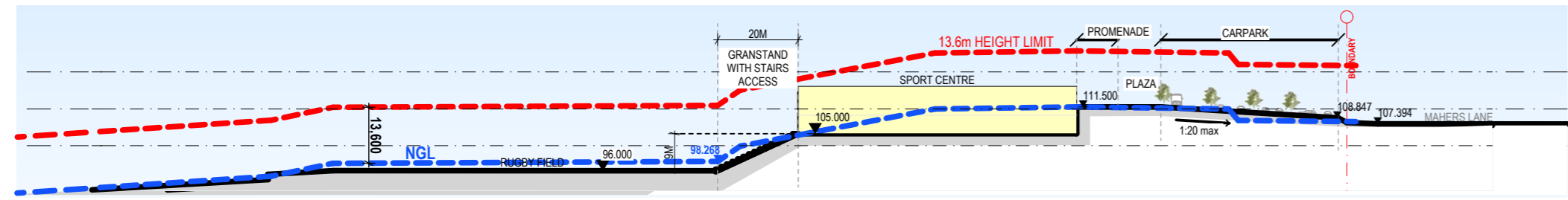
MAHERS LANE, TERRANORA, NSW, 2486

The masterplan establishes a connected and cohesive educational campus that celebrates learning, wellbeing, and community. Building on the school's existing facilities, it creates a unified network of precincts—from early learning through to senior years—designed to integrate with and provide opportunities to engage with the natural landscape of the Terranora site.

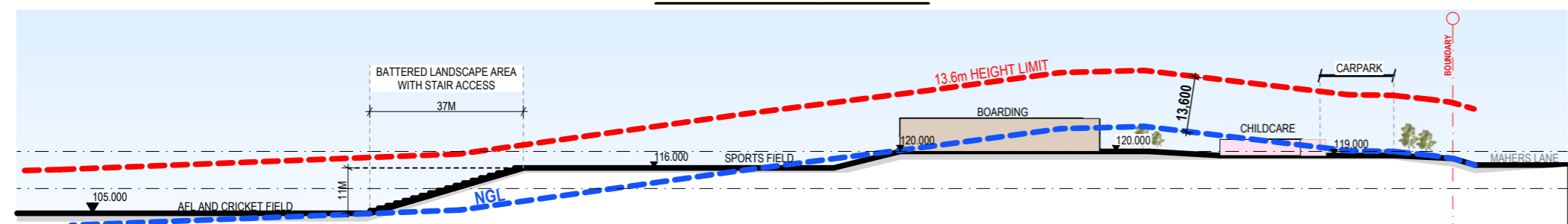
Key design approaches include landscape integration, outdoor resting and gathering areas, indoor-outdoor interaction, undercover promenades, shaded linkways, and clear pedestrian connections between buildings. Together, these promote accessibility, comfort, and connection across the entire campus.

The masterplan incorporates facilities such as a Junior School, Childcare Centre, Boarding, Pool and Sports Centres, Performing Arts and Science Precincts, and new outdoor sports fields, all carefully positioned through significant cut and fill to optimise land use while maintaining environmental balance.

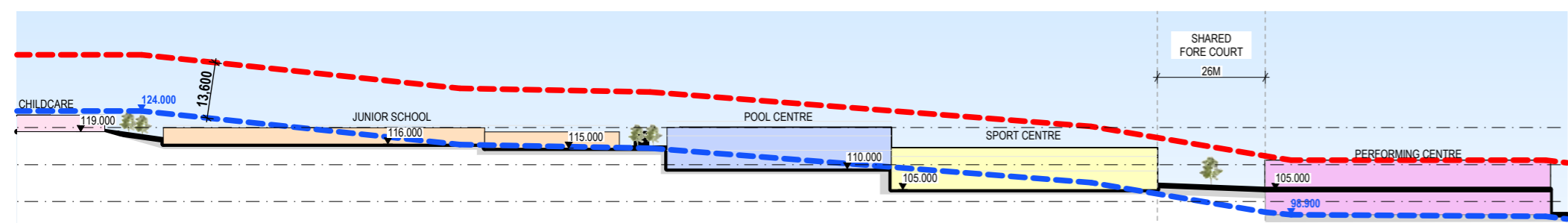
Guided by sustainability, landscape and community principles, the design responds to environmental, bushfire, and stormwater requirements, enhances biodiversity protection.



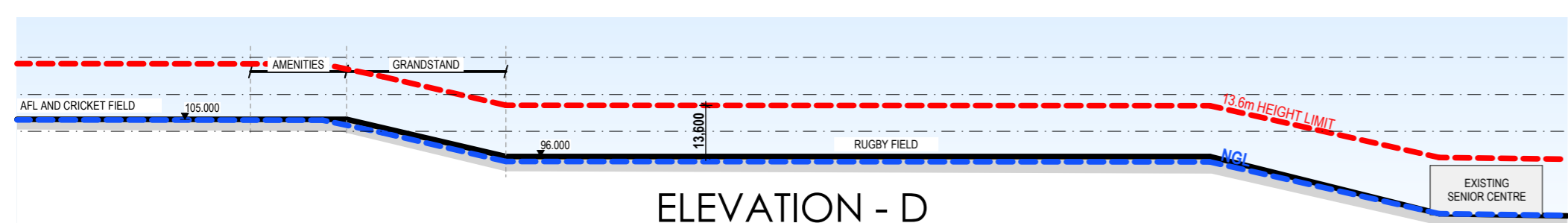
ELEVATION - A



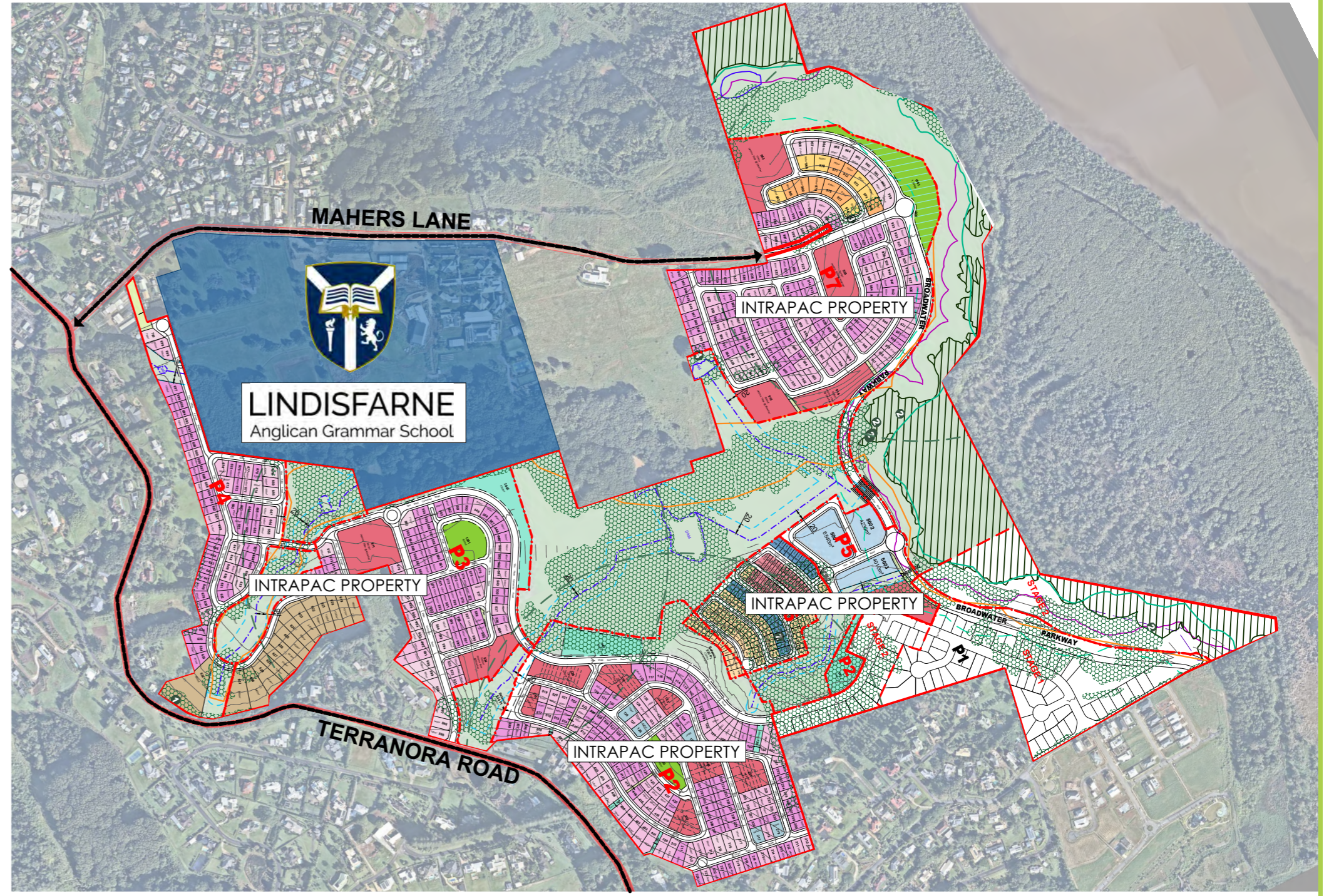
ELEVATION - B



ELEVATION - C



ELEVATION - D



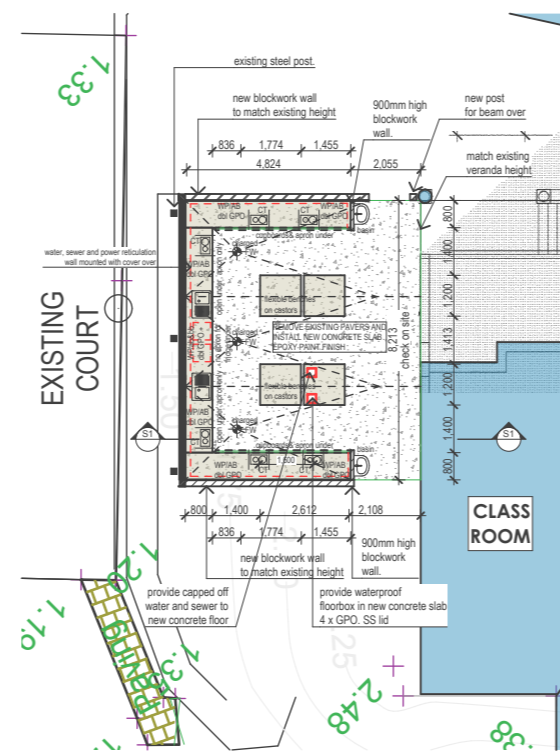
SUNSHINE AVENUE CAMPUS MASTER PLAN

36 SUNSHINE AVENUE, TWEED HEADS SOUTH, NSW 2486

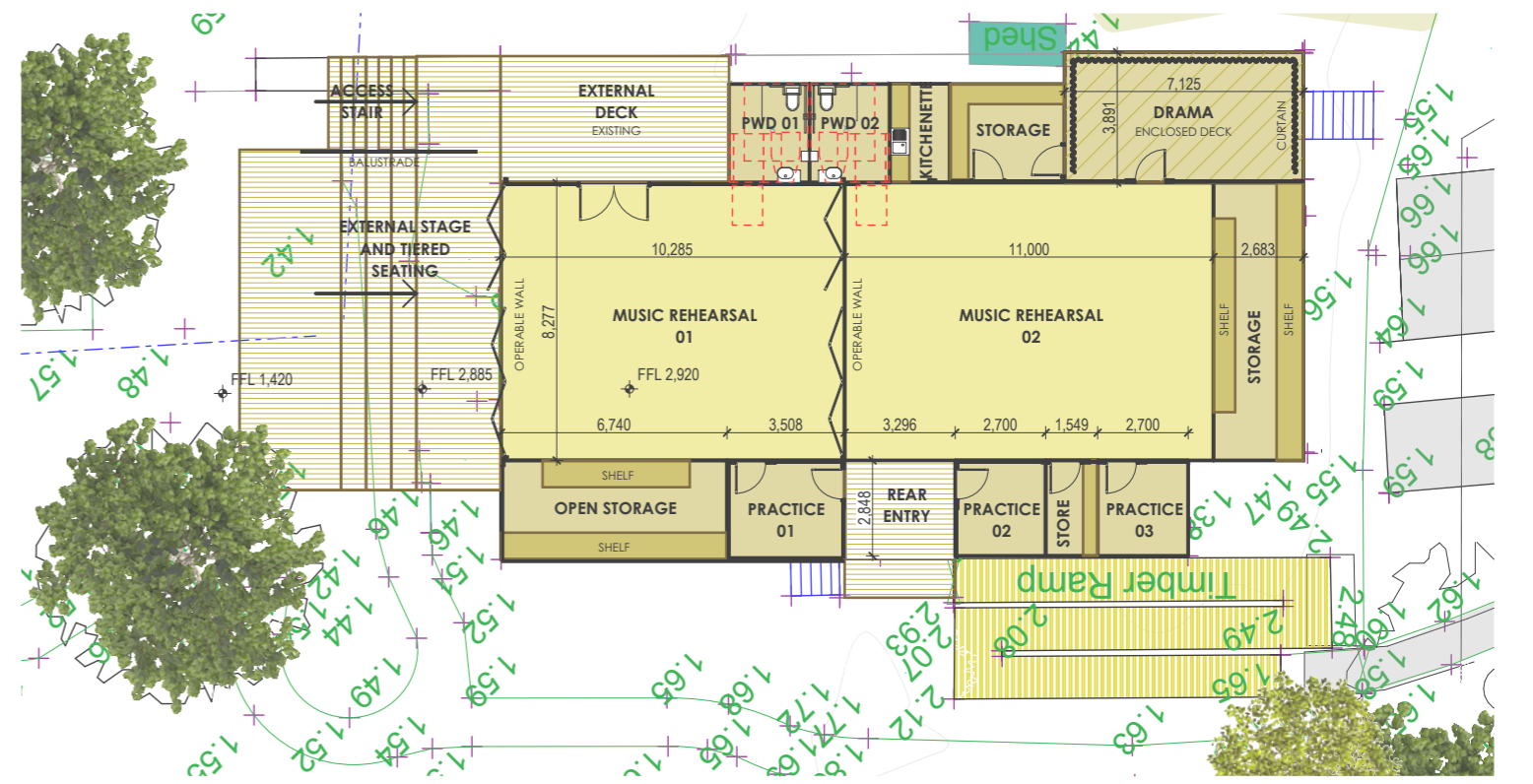
The Sunshine Avenue Masterplan provides a future-focused framework for the redevelopment of the site, incorporating a revised site plan and clearly defined zoning to support long-term campus growth. The proposal introduces a larger, purpose-built Administration Centre, a new Music Centre, a contemporary Library, and an enlivened Pizza Court as a central social and gathering space.

A key feature of the masterplan is the integration of combined STEAM classrooms with the Library, creating a highly flexible, multi-functional learning precinct that expands teaching capacity and supports cross-disciplinary collaboration.

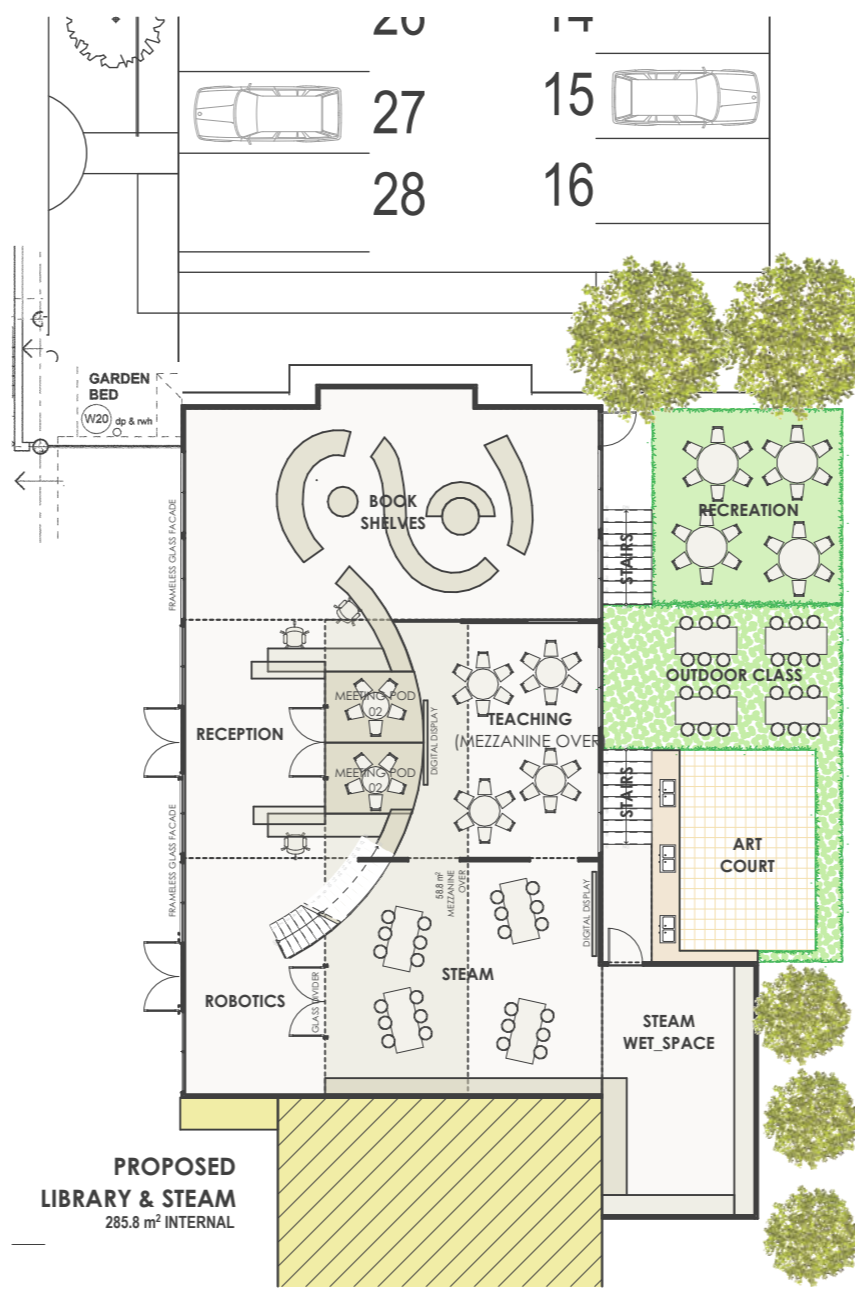
Overall, the masterplan strengthens campus cohesion, enhances daily student experience, and provides adaptable, future-ready learning environments aligned with contemporary educational needs.



PROPOSED PIZZA COURT - FLOOR PLAN



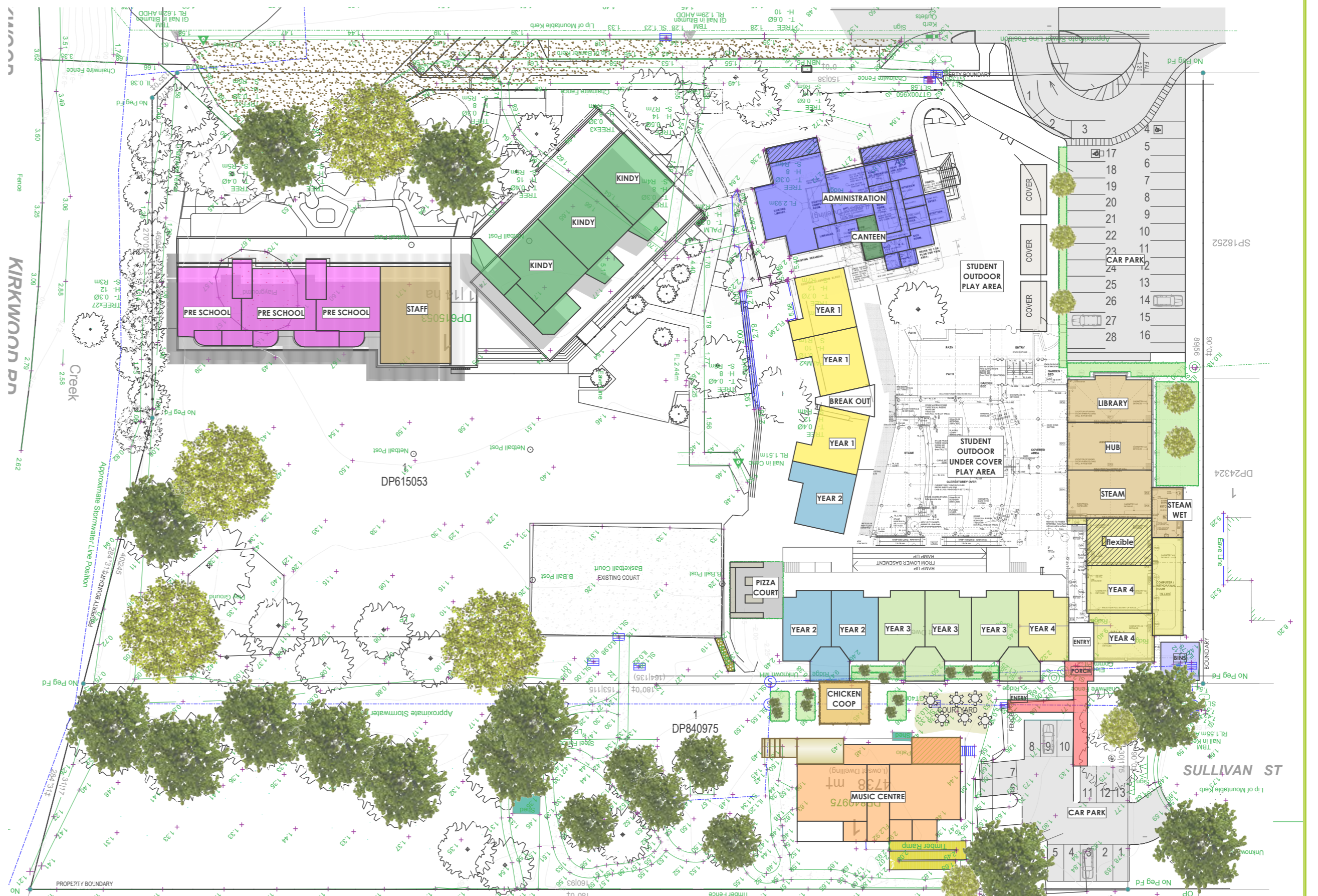
PROPOSED MUSIC CENTRE - FLOOR PLAN



PROPOSED LIBRARY - FLOOR PLAN



PROPOSED ADMIN - FLOOR PLAN



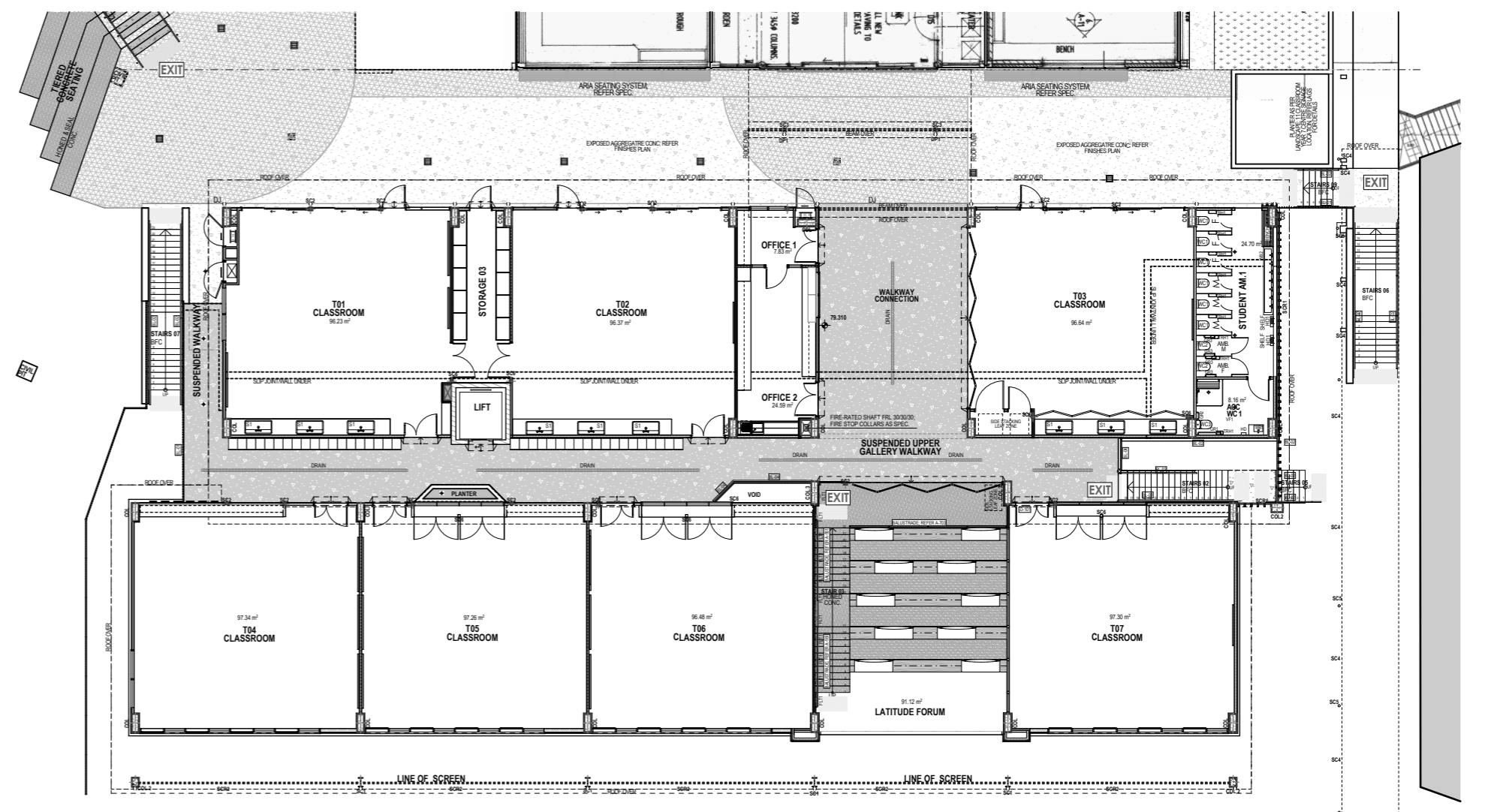
PROPOSED SITE PLAN

YEAR 7 CENTRE

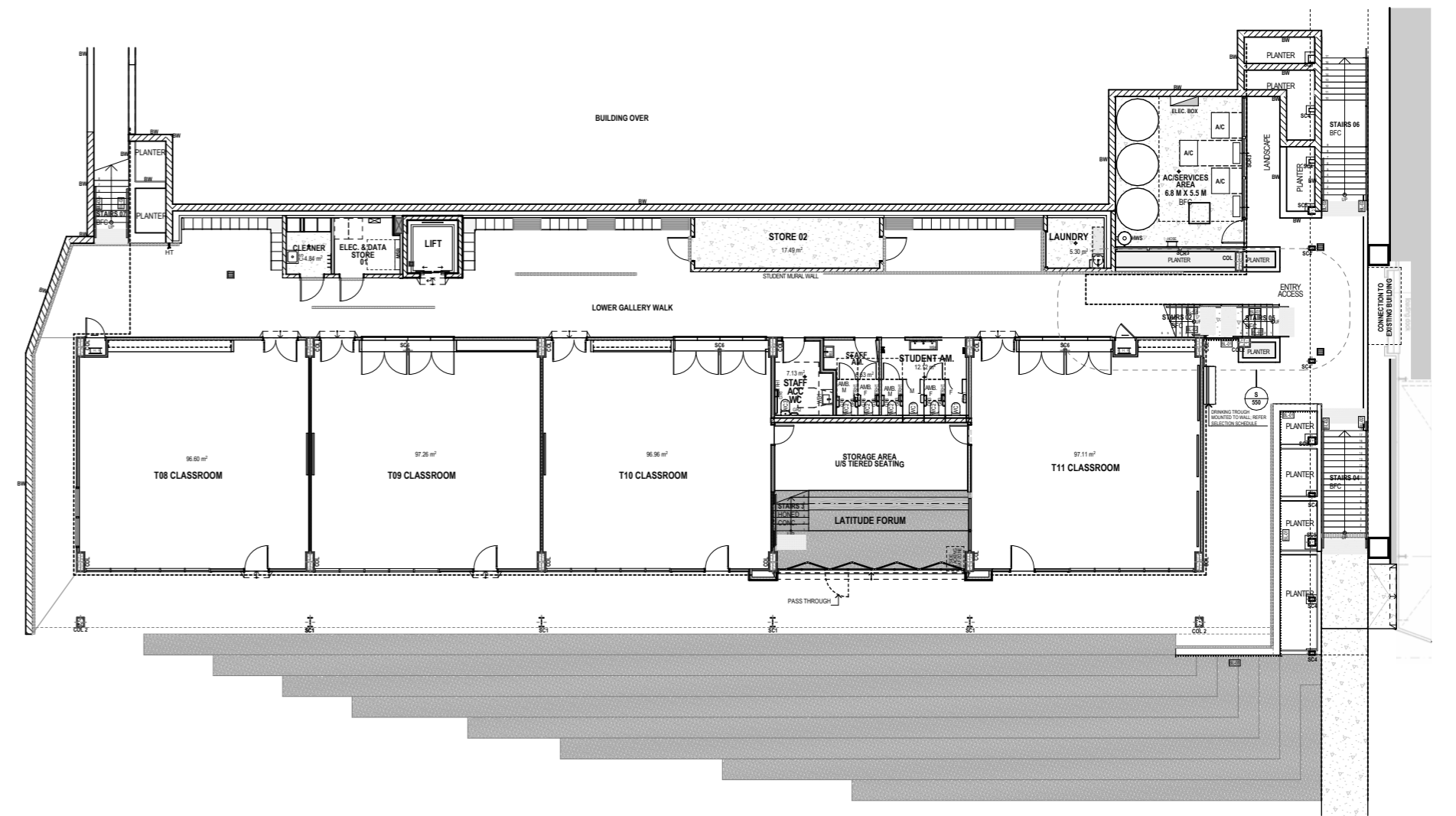
86 MAHERS LANE, TERRANORA, NSW, 2486

The Year 7 Centre for Lindisfarne Anglican Grammar School is designed with a split-level layout that seamlessly integrates horizontal and vertical flow, optimizing movement and connectivity across the space. A void to the lower level assists with natural light and ventilation, while planter boxes on the upper floor enhances connection to nature. Art display opportunities on both levels reinforce the connection to the 3 purpose built Creative Industries Flexible Art Classrooms on the upper floor.

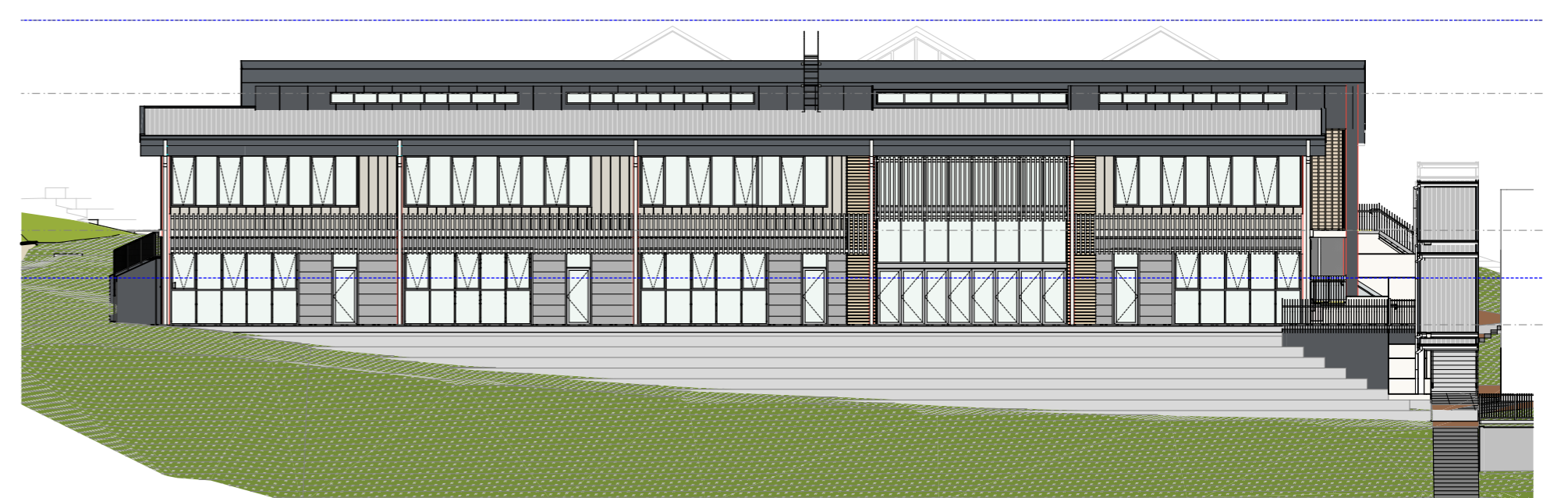
Zoning is achieved through the use of varied materials and ceiling treatments, clearly defining different areas within the building. Operable windows and doors further enhance natural ventilation and light, creating flexible and airy spaces that promote learning and collaboration. This design balances functionality, sustainability, and a strong connection to the surrounding landscape.



UPPER FLOOR PLAN



LOWER FLOOR PLAN



EASTERN ELEVATION

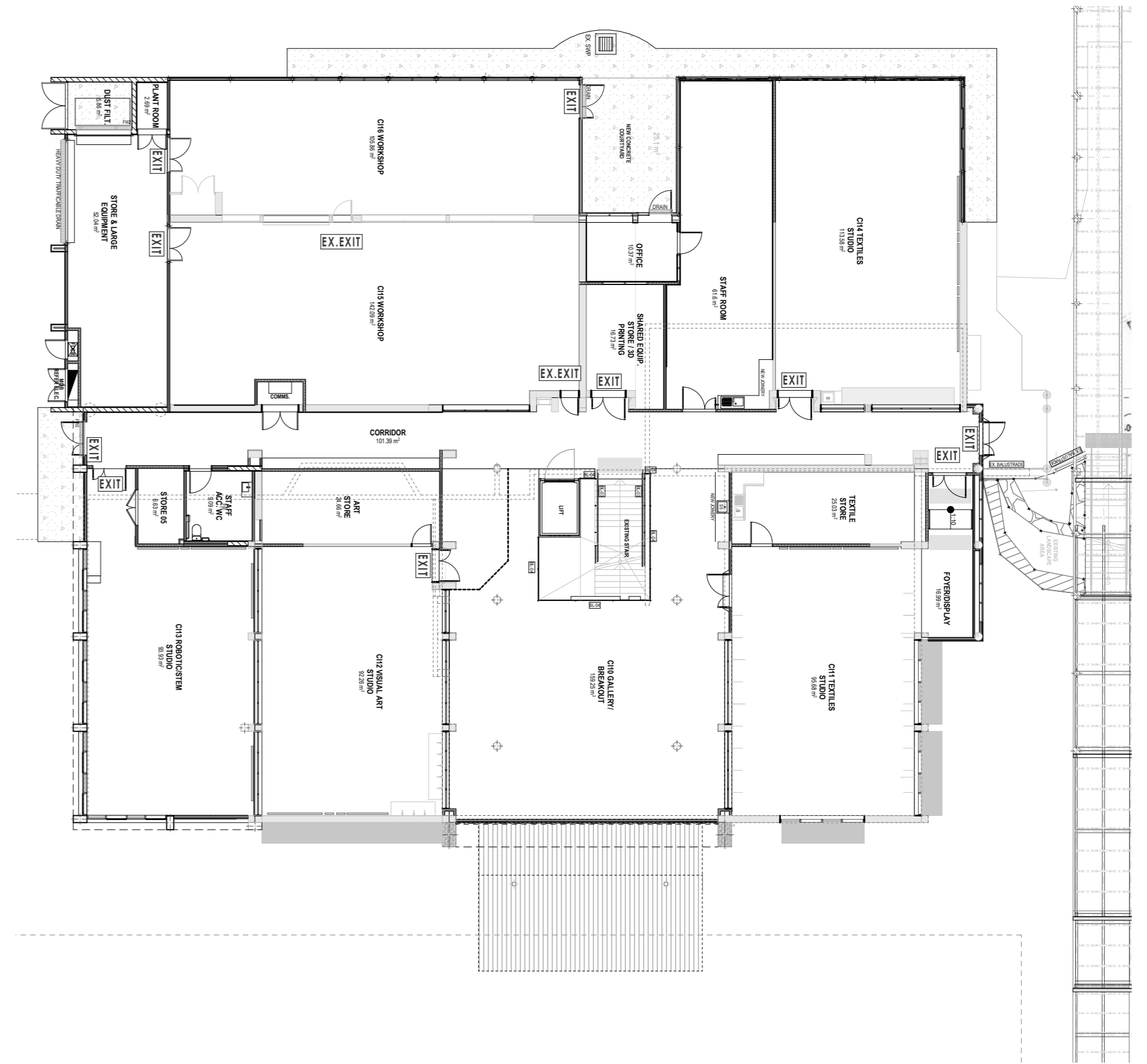
CREATIVE INDUSTRIES REFURBISHMENT AND EXPANSION

86 MAHERS LANE, TERRANORA, NSW, 2486

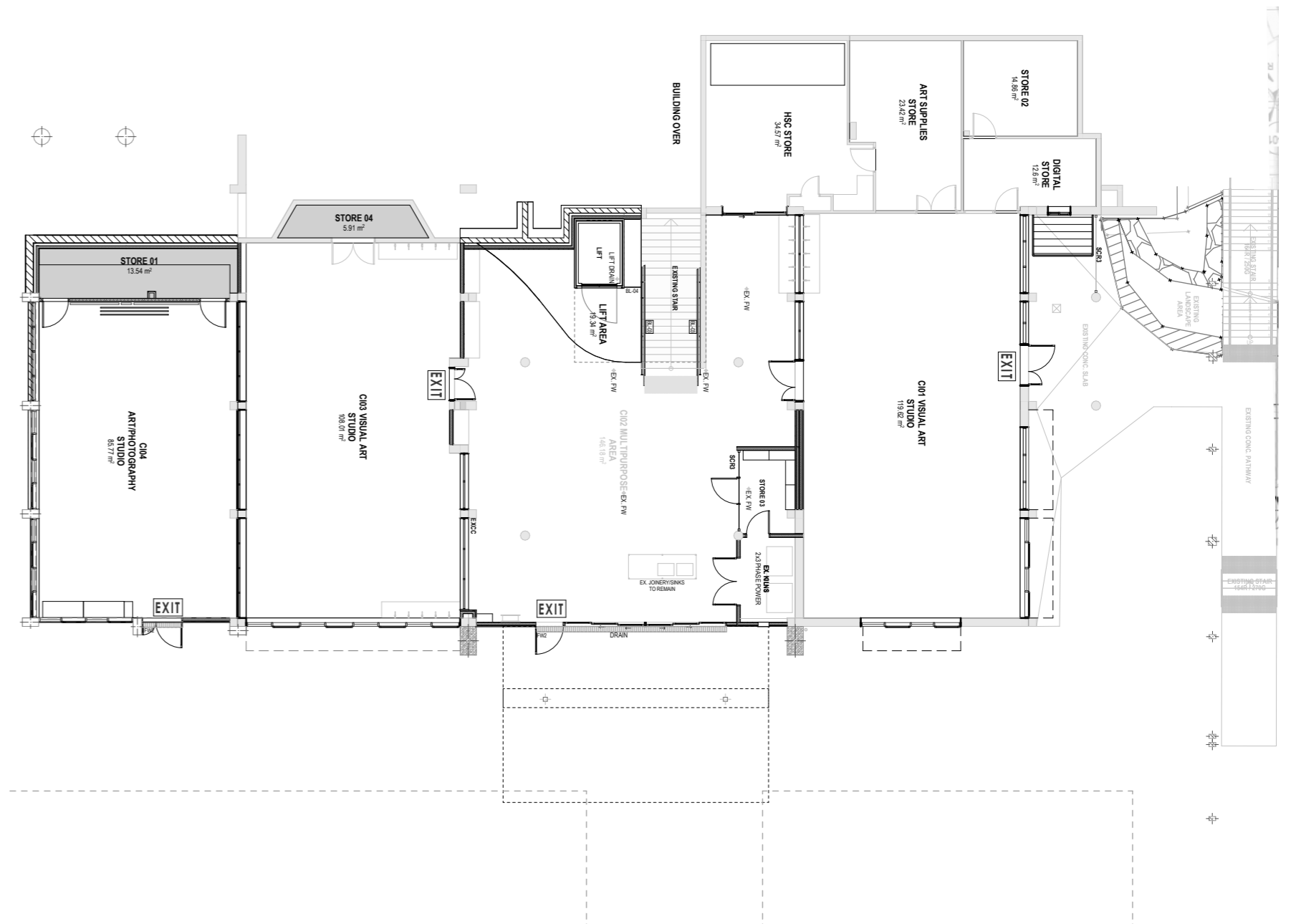
The Creative Industries Building for Lindisfarne Anglican Grammar School includes a combination of targeted renovations and new works designed to enhance the building's functionality and educational experience, while complementing the adjacent 11 Classroom Year 7 Centre. The upgrades maintain the original structure's integrity while introducing contemporary interventions that align with the evolving needs of the school.

New works are designed to mirror the language and rhythm of the adjacent Year 7 Centre, promoting visual cohesion across the campus. Internal spaces are reconfigured to support creative learning through flexible open areas, defined zones for specific activities, and a dedicated Gallery space.

Natural light and ventilation are improved through selective openings and skylights above the upper floor Gallery space. The renovated building balances the retention of character with the integration of new, dynamic learning spaces, reinforcing its role as a vital part of the school's academic and creative community.



UPPER FLOOR PLAN



LOWER FLOOR PLAN



EASTERN ELEVATION



LINDISFARNE
Anglican Grammar School

RAUNIK
design group
ARCHITECTS

SCIENCE PRECINCT

MAHERS LANE, TERRANORA, NSW, 2486

The Science Building is envisioned as a contemporary learning environment that reflects Lindisfarne's commitment to innovation, sustainability, and community. The design combines a modern architectural language with a natural, character-driven material palette, ensuring the building sits harmoniously within the campus landscape.

A focus on interactive and user-oriented design encourages exploration, curiosity, and collaboration—core to the school's educational philosophy. Flexible and dynamic learning spaces promote cross-disciplinary engagement and adaptability for future teaching methods.

The building integrates innovative technology and sustainable, climate-responsive strategies, maximising natural light, ventilation, and energy efficiency. Together, these elements create an environment that is inspiring, inclusive, and forward-looking—a hub for scientific discovery and collaborative learning.



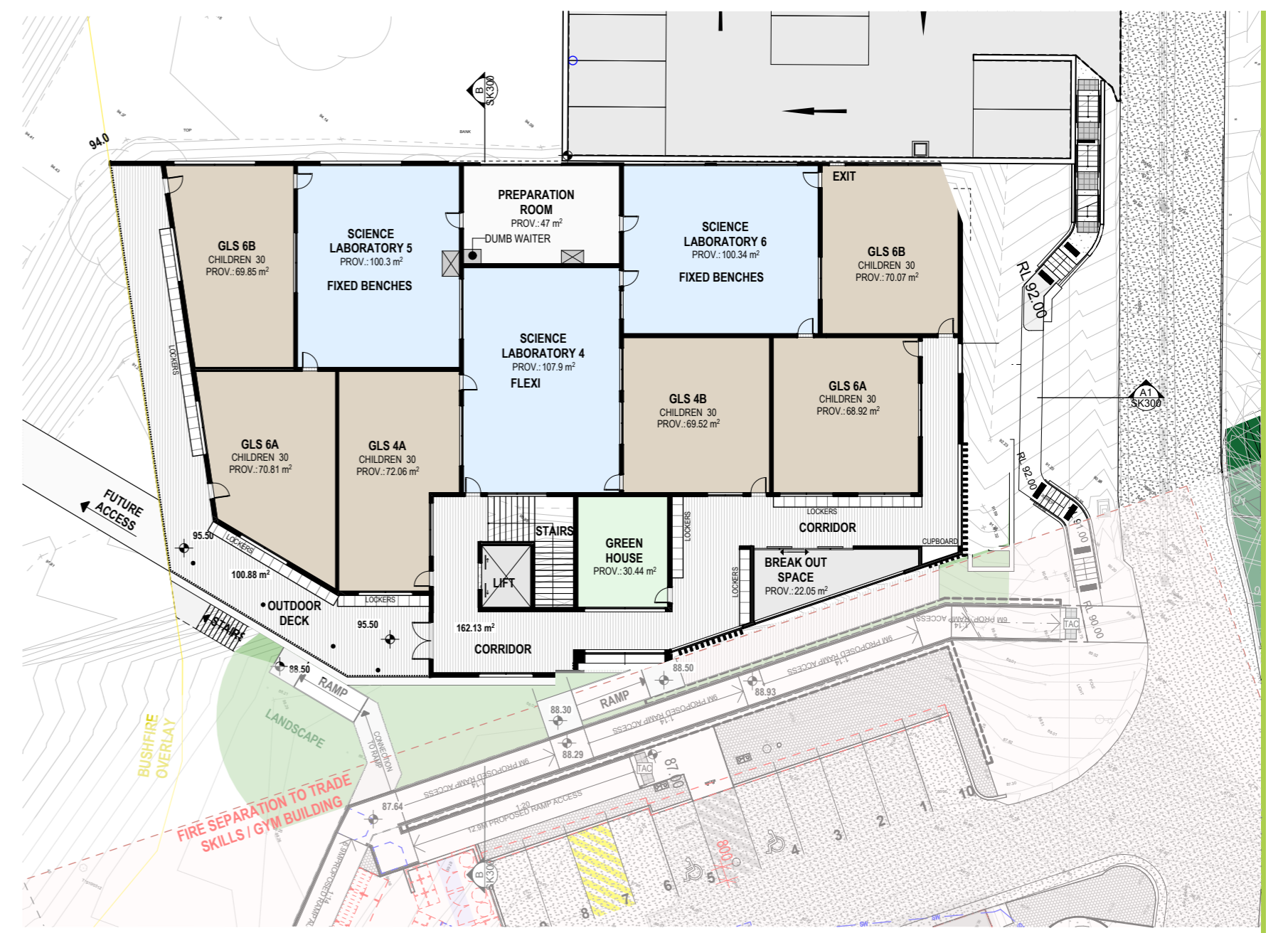
EASTERN ELEVATION



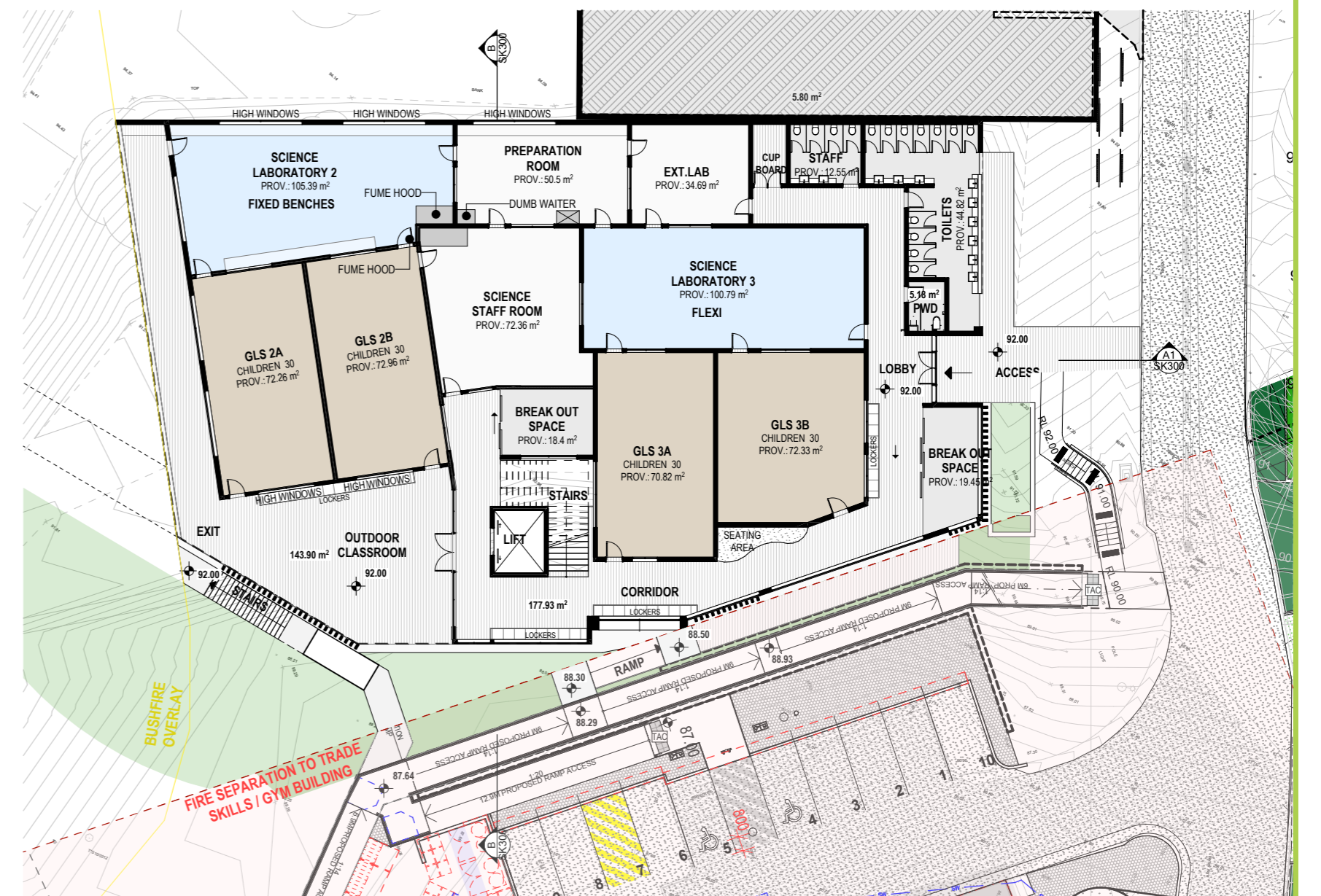
NORTHERN ELEVATION



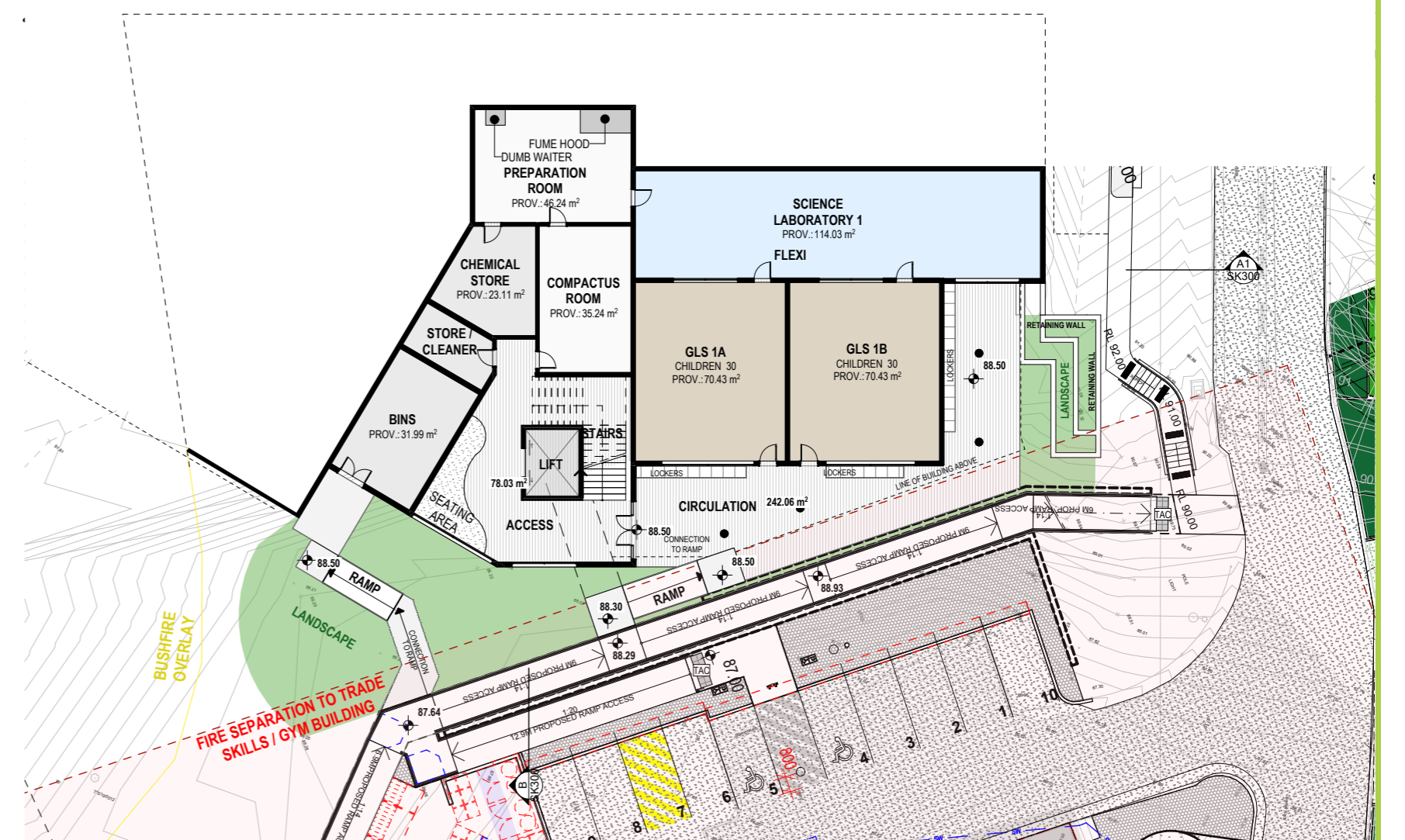
SOUTHERN ELEVATION



UPPER FLOOR PLAN



GROUND FLOOR PLAN



LOWER FLOOR PLAN



JUNIOR SCHOOL CAMPUS MAHERS LANE

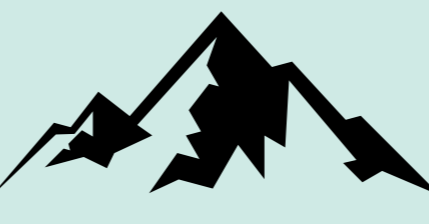
MAHERS LANE, TERRANORA, NSW, 2486

The Junior School is designed as a contemporary and nurturing learning environment that reflects Lindisfarne's Anglican ethos and the character of the Terranora landscape. The building form responds to the natural ridgeline and surrounding low-scale context, framing views to the hinterland and coast while minimising visual impact.

A child-scaled, flexible layout promotes safety, curiosity, and a sense of belonging. Strong indoor-outdoor connections enable outdoor learning, play, and environmental engagement within a setting of retained and enhanced native vegetation.

The design integrates passive environmental strategies, natural light, ventilation, and shading to achieve sustainable, climate-responsive performance. Materials are durable, low-maintenance, and cohesive with the broader campus character, reinforcing a unified identity.

Overall, the Junior School provides a welcoming, contextually sensitive, and future-focused environment that supports collaboration, wellbeing, and lifelong learning.



Contextual Response

Building massing responds to the Terranora ridgeline and surrounding low-scale residential character.

Views to the hinterland and coast are framed while minimising visual impact on the skyline.

Engage with the broader landscape through articulated outdoor rooms and courtyards



Educational Excellence

Learning spaces are flexible, supporting contemporary teaching practices.

Strong indoor-outdoor connections provide opportunities for outdoor classrooms, play, and environmental learning.

Child-scaled design promotes safety, comfort, and a sense of belonging for Junior students.



Community & Identity

Architecture reinforces the Anglican ethos of reflection, connection, and inclusivity.

Materiality and detailing are consistent with recent campus projects, ensuring cohesion across the school.

Shared facilities support both school and broader community engagement.



Sustainability & Wellbeing

Passive design strategies maximise natural light, ventilation, and shading, reducing reliance on mechanical systems.

Durable, low-maintenance, climate-responsive materials are selected to suit the coastal environment.

Landscaped outdoor learning spaces, water management strategies, and biodiversity planting contribute to student wellbeing and ecological value.

